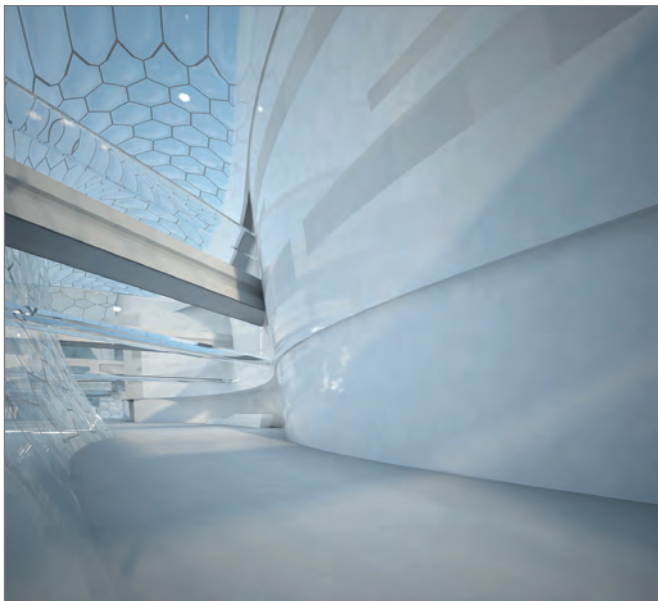


INNOVATION IN DESIGN AND OPERATION DELIVERS GREATER PATIENT WELL BEING



This scheme was subject to a worldwide design team competition, which was won in September 2006 by the BDP/Groupe 6 and EC Harris consortium.

A centre of excellence

The new facility sits in the midst of outstanding natural beauty and aims to maximise the impact of its environment on the wellbeing of both patients and staff. The scheme is approximately 53,000m² and will provide specialist healthcare services for the whole of the Ukraine.

Our approach

The services provided by the EC Harris team have encompassed a full technical input including; health planning, equipment advice, cost and lifecycle advisory services.

We worked with the key stakeholders to engineer a forward thinking design from concept inception. Our team's input has helped to optimise performance, plan for sustainable operations and to define the standard for the hospital of the future.

Adding value

The hospital provides a radically different dimension in children's care with the plateaux technique leading to a fundamental review of best practice in hospital design.

Construction started in autumn 2009 with EC Harris supporting the client to ensure that the required patient-centric outcomes are at the heart of the built asset. The scheme delivers high tech clinical facilities including radiotherapy whilst minimising the conventional look of a hospital.

“Our new health facility will enable us to deliver a far greater range of services in line with best international practice and will help improve the provision of diagnosis, treatment and long term rehabilitation of our population.”

Rostyslav Zamlynsky, Finance Director, Children's Hospital of the Future Charitable Foundation, Ukraine

“EC Harris has been one of the key members of the team.”

Driving innovation

Using a plateau combination enables better horizontal communication and movement between inpatients and diagnostics. The design in theatres and supporting space has created a combination of surgical best practice and efficient overall use of space. The design incorporates a series of interchangeable pod designs. All of the pods are truly adaptive and numbers of rooms standardised which is proven to not only aid clinical risk management but long term flexibility.

Contact

Conor Ellis

Partner, Head of Health

e conor.ellis@echarris.com

w echarris.com/health