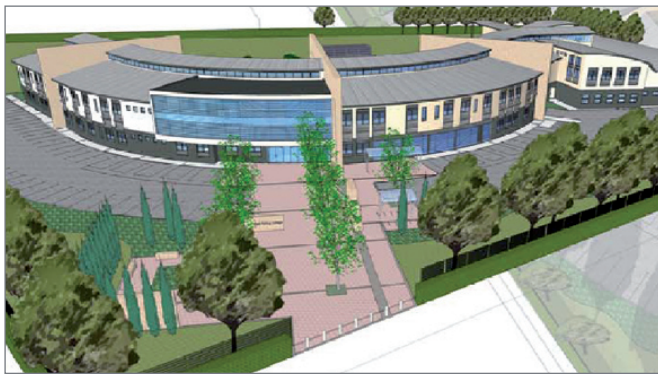


BETTER LEARNING ENVIRONMENTS REDUCE BARRIERS TO ACCESS AND PROMOTE THE SUCCESSFUL COMPLETION OF LEARNING PROGRAMMES



East Riding College's Bridlington campus was largely outdated and inadequate for the College's need and future ambitions. The facilities constrained the adoption of a wide range of different teaching and learning strategies required for the delivery of world class teaching and learning.

The campus is currently being redeveloped to provide state of the art facilities, pleasing and desirable learning environments, and will reduce social, economic, institutional and individual barriers to access, therefore promoting successful completion of learning programmes, which will ensure that learners have access to learning which will lead to opportunities for employment and economic regeneration.

“Phased handovers allowed critical buildings to be handed over in line with the funding profile, and our project management methodology ensured the required outcome first time, as well as fixed price tenders in line with the business case.”

Creating solutions

Implementation of the project is currently underway and will allow the College to substantially improve the facilities that are offered across the estate. Time expired and unsuitable accommodation is being replaced with high quality, flexible learning environments that will support the College in continuing trends of growing success.

The new campus buildings and associated landscaping will make unequivocal statements in respect of the high priority that is attached to education and training. It is intended that the new facilities will engage local people to provide a vehicle for education, social inclusion, increased self-esteem and confidence.

Other benefits achieved through implementation of the project will include:

- An efficiency gain in the size of the College estate to support the future curriculum delivery and student body
- A reduction in running and maintenance costs associated with aged buildings
- Creation of modern, fit for purpose learning environments
- A promotion of growth in student recruitment through the creation of 21st century learning environments
- Raising the Colleges profile through the creation of flagship buildings
- Delivery on LSC priorities and achievement of national objectives.

Adding value

As part of the design process the team are committed to the consideration of sustainability issues in collaboration with the College and the opportunity to use best practice principles of low energy sustainable design have been taken.

The principles of sustainability include:

- Contribution to the quality and sustainability of the natural and built environments
- Specification of materials from renewable resources. Minimising the consumption of resources, especially those which are not renewable
- Maximise health, safety and comfort of building users
- Minimising the pollution of soil, air and water
- Reduction of depletion of the earth's finite resources via the reduction of the use of fossil fuels. Solar passive design is of particular relevance in reducing the need for dependence on energy sources derived from fossil fuels
- Increased general awareness of environmental issues
- Maintenance of restoration of biodiversity.

We utilised our in-house Further Education team to apply for, and deliver, Learning and Skills Council funding at an intervention rate of 74%.

Phased handovers allowed critical buildings to be handed over in line with the funding profile, and our project management methodology ensured the required outcome first time, as well as fixed price tenders in line with the business case.

Contact

Simon Lucas

Partner, Head of Education & Children's Services

t +44 (0)207 833 6799

e simon.lucas@echarris.com

w echarris.com/education